

Series

agriTERM

hortiTERM

Direct fired gas heating



agriTERM

LOW PRESSURE - NATURAL GAS OR LPG

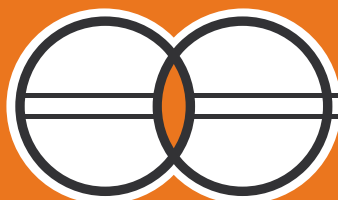


hortiTERM

HIGH PRESSURE LPG GAS



Quality products



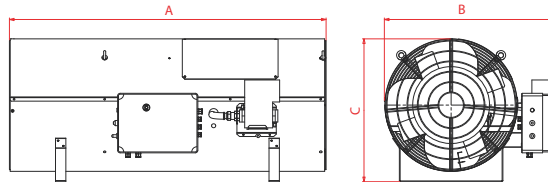
TERMOTECNICA®
PERICOLI

**CARATTERISTICHE TECNICHE - CARACTERISTIQUES TECHNIQUES
TECHNISCHEN DATEN - TECHNICAL SPECIFICATIONS - CARACTERÍSTICAS TÉCNICAS**

LOW PRESSURE - NATURAL GAS OR LPG

agriTERM

- Low pressure burner for natural gas or LPG
- Electronic waterproof control box
- Power cord with plug
- Gas train
- Stainless steel body frame



agriTERM 80

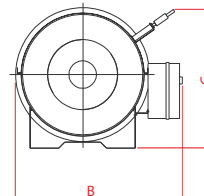
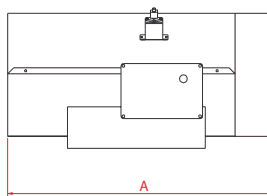
agriTERM 100

Portata termica max - Puissance thermique max - Wärmeleistung max Max heating output - Potencia térmica máx	Qn (Hs) [kW] [kcal/h]	80 68.800	100 86.000
Portata d'aria - Débit d'air - Luftdurchsatz - Air output - Capacidad aire	[m3/h]	5.000	6.000
Combustibile - Combustible - Brennstoff - Fuel - Combustible		G 20 G 30 G 31	G 20 G 30 G 31
Pressione gas - Pression gaz - Betriebsdruck - Gas pressure - Presión gas	[mbar]	20 30 / 50 37 / 50	20 30 / 50 37 / 50
Consumo - Consommation - Brennstoffverbr. - Consumption - Consumo	[Nm3/h]	7,62 - -	9,52 - -
@ 1.013 mbar / 15° C	[kg/h]	- 5,82 5,71	- 7,27 7,14
Alimentazione elettrica - Power supply - Netzanschluss Alimentation électrique - Alimentación eléctrica:			
Fase - Phase - Phase - Phase - Fase		1	1
Tensione - Tension - Spannung - Voltage - Tensión	[V]	230	230
Frequenza - Fréquence- Frequenz Frequency - Frecuencia	[Hz]	50	50
Potenza elettrica totale - Puissance électrique - Leistungsaufnahme - Total power consumption - Potencia eléctrica	[W]	500	780
Livello sonoro a 1 m - Niveau sonore à 1 m - Geräuschspegel a 1 m - Noise level at 1 m - Nivel sonoro a 1 m	[dBA]	82	84
Dimensioni, A * B * C - Dimensions, A * B * C - Masse, A * B * C Dimensions, A * B * C - Dimensiones, A * B * C	[mm]	1.045 x 675 x 552	1.230 x 675 x 552
Peso - Poids - Gewicht - Weight - Peso	[kg]	58	66,5
Con imballo: With packing: Mit Verpackung : Avec emballage: Con embalaje:	Dimensioni: L*P*A – Dimensions: L*P*H Masse: H*B*T – Dimensions: L*W*H Dimensiones: L*W*H	1145 x 710 x 620	1370 x 710 x 620
	Peso - Poids – Gewicht – Weight - Peso	65	74

HIGH PRESSURE LPG GAS

hortiTERM

- Automatic built-in LPG burner
- Electronic waterproof control box
- Infrared flame detector
- Power cord with plug
- Gas pressure regulator (0,5-2 bar)
- Cut off valve for flow excess
- Stainless steel body frame



hortiTERM 80

hortiTERM 110

hortiTERM 125

Portata termica max - Max heating output - Wärmeleistung max - Puissance thermique max - Potencia térmica máx	Qn (Hs) [kW] Qn (Hi) [kcal/h]	33/80 26.100/63.300	35/109 28.000/86.000	48/125 38.000/98.900
Portata d'aria - Débit d'air - Luftdurchsatz - Air output - Capacidad aire	[m3/h]	2.100	3.260	6.000
Consumo gas - Gas consumption - Gas Verbrauch - Consommation gaz - Consumo gas	[kg/h]	2,36/5,72	2,53/7,77	3,43/8,93
Alimentazione elettrica - Power supply - Netzanschluss Alimentation électrique - Alimentación eléctrica:				
Fase - Phase - Phase - Phase - Fase		1	1	1
Tensione - Tension - Spannung - Voltage - Tensión	[V]	230	230	230
Frequenza - Fréquence- Frequenz Frequency - Frecuencia	[Hz]	50	50	50
Potenza elettrica totale - Total power consumption - Leistungsaufnahme Puissance électrique - Potencia eléctrica	[W]	200	345	870
Pressione gas - Pression gaz - Betriebsdruck - Gas pressure - Presión gas	[bar]	0,5/2,0	0,5/2,0	0,5/2,0
Livello sonoro a 1 m - Niveau sonore à 1 m - Geräuschspegel a 1 m - Noise level at 1 m - Nivel sonoro a 1 m	[dBA]	73	77	78.5
Dimensioni, A * B * C - Dimensions, A * B * C - Masse, A * B * C Dimensions, A * B * C - Dimensiones, A * B * C	[mm]	775 x 490 x 390	985 x 560 x 450	1.115 x 705 x 585
Peso - Poids - Gewicht - Weight - Peso	[kg]	20,5	35	63
Con imballo: With packing: Mit Verpackung : Avec emballage: Con embalaje:	Dimensioni: L*P*A – Dimensions: L*P*H Masse: H*B*T – Dimensions: L*W*H Dimensiones: L*W*H	800 x 505 x 410	1010 x 575 x 450	1145 x 710 x 620
	Peso - Poids – Gewicht – Weight - Peso	24	39	68

All indications in this catalogue are without engagement. In a costant effort to improve our products, specifications may change.



TERMOTECNICA PERICOLI SRL.
P.o. box 262
17031 Albenga (SV), Italy
Tel. +39 0182 589006
Fax +39 0182 589005
www.pericoli.com
termotecnica@pericoli.com